

# LZ2S Series Fluorescent & Emergency

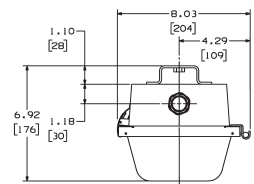
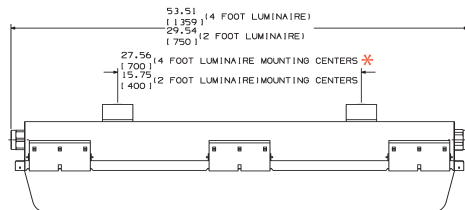
Number of Lamps/Watts	Voltage	Description	LZ2S	LZ2SE <sup>②</sup> Battery-Backed
<b>BIAXIAL Lamp Type Fixtures</b>				
1 - 40W	120-277V, 50/60Hz	2' 1-Lamp Biaxial Electronic, 0°F Start 4-Pin	LZ2S40130	LZ2SE1 - 40130
1 - 55W	120-277V, 50/60Hz	2' 1-Lamp Biaxial Electronic, 0°F Start 4-Pin	LZ2S55130	LZ2SE1 - 55130
2 - 40W	120-277V, 50/60Hz	2' 2-Lamp Biaxial Electronic, 0°F Start 4-Pin	LZ2S40230	LZ2SE1 - 40230
4 - 40W	120-277V, 50/60Hz	4' 4-Lamp Biaxial Electronic, 0°F Start 4-Pin	LZ2S40430	LZ2SE1 - 40430
<b>Double - Ended Lamp Type Fixtures</b>				
2 - 17W	120-277V, 50/60Hz	2' 2-Lamp T8 Electronic, 0°F Start Medium Bi-Pin	LZ2S17230	LZ2SE2-17230
3 - 17W <sup>③</sup>	120-277V, 50/60Hz	2' 3-Lamp T8 Electronic, 0°F Start Medium Bi-Pin	LZ2S17330	LZ2SE2-17330
2 - 28W	120-277V, 50/60Hz	4' 2-Lamp T5 Electronic, 0°F Start Miniature Bi-Pin	LZ2S28230	LZ2SE1-28230
3 - 28W	120-277V, 50/60Hz	4' 3-Lamp T5 Electronic, 0°F Start Miniature Bi-Pin	LZ2S28330	LZ2SE1-28330
2 - 32W	120-277V, 50/60Hz	4' 2-Lamp T8 Electronic, 0°F Start Medium Bi-Pin	LZ2S32230	LZ2SE2-32230
	347V, 60Hz		LZ2S32215	LZ2SE2-32215
3 - 32W	120-277V, 50/60Hz	4' 3-Lamp T8 Electronic, 0°F Start Medium Bi-Pin	LZ2S32330	LZ2SE2-32330
	347V, 60Hz		LZ2S32315	LZ2SE2-32315
2 - 40W	120V, 60Hz	4' 2-Lamp T12 Electronic, Medium Bi-Pin Start 50°F 40W/60°F 34W	LZ2S40201	LZ2SE2-40201
	277V, 60Hz		LZ2S40204	LZ2SE2-40204
	230V, 50Hz <sup>①</sup>		LZ2S40208	LZ2SE2-40208
2 - 44W	120V-277V, 50/60Hz	4' 2-Lamp T8 H.O. Electronic, -20°F Start Recessed Double Contact	LZ2S44230	LZ2SE1-44230
2 - 54W	120V-277V, 50/60Hz	4' 2-Lamp T5 H.O. Electronic, -20°F Start Miniature Bi-Pin	LZ2S54230	LZ2SE1-54230
2 - 60W	120V, 60Hz	4' 2-Lamp T12 H.O. Electronic, -20°F Start Recessed Double Contact	LZ2S60201	LZ2SE1-60201
	277V, 60Hz		LZ2S60204	LZ2SE1-60204

① 50 Hz ballast is magnetic.

② Digit after E is number of lamps energized during power loss. For optional fused ballasts, add to catalog number F1 for 120V, F4 for 277V, F8 for 230V.

③ 3 x 17 W available in 347V, change 30 at end of catalog number to 15.

Fusing not for Marine or Canadian use. Lamps not included.



\*Mounting Centers are 1/4-20" tapped for user all thread rod or cataloged brackets.



**KILLARK**

**LINEARLITE**<sup>®</sup>\*

\* marca registrada MEXICO



**ABS**  
Type Approval

**LZ2S**  
Series

**316 Stainless Steel  
Linear Fluorescent for  
Wet, Harsh, Corrosive  
& Hazardous Locations**

Now includes 54W T5 High Output

Distributed by:



**Oil Rigs &  
Offshore Platforms**

**Chemical  
Plants**

**Waste Water  
Treatment**

**Tunnels**


**Food Processing**

**Coastal Areas**

**LINEARLITE®**

\*marca registrada MEXICO

Class I, Div. 2, Groups A,B,C,D  
Class I, Zone 2, Groups IIC, IIB, IIA  
Class I, Zone 2, AEx nAll, Ex nAll  
**Class II, Div. 1 & 2, Groups E,F,G**  
Wet Locations  
NEMA 4X, IP66

 Certified - File LR11713

**ABS Type Approval**

**Features**

- NEMA 4X & IP66 rated 316 stainless steel housing with clear Lexan® impact resistant polycarbonate lens.
- Quick release diffuser clamps and hinged cover requires no special tools
- Two 3/4" NPT 316 stainless hubs - one at each end (includes aluminum 3/4" close-up plug and two 3/4" x 1/2" reducers for maximum user flexibility)
- Two 1/4" - 20 stainless bushings furnished in top of fixture for threaded rod
- ABS (American Bureau of Shipping) type approval for use on decks, vessels, platforms, barges, ships and boats. Also suitable for docks and marinas

Lexan® is a registered trademark of General Electric.



**Product Range**

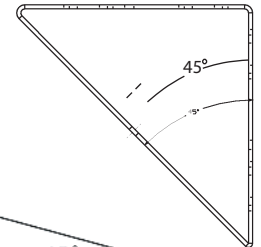
- 2' and 4' luminaries
- Lamp types -  
Linear 17W, 28W, 32W, 40W, 44W, 54W and 60W  
Long Compact Biaxial 40W, 55W
- Emergency Battery-Backed available
- Electronic Ballast standard
- World voltage (most models) 120 thru 277V, 50/60Hz

**Applications**

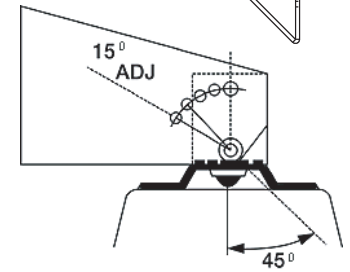
- Suitable for where Enclosed and Gasketed fixtures are required to withstand exposure to moisture, dust and corrosives.
- Typical applications include those pictured above plus many others.
- The LZ2S Series additionally can be used where exposed to Class I, Division 2 and Zone 2 hazardous vapors, plus grain, coal, and Class II **Group E** metal dusts.

**Stainless Steel  
Mounting Accessories**

**Wall Bracket Set**  
Part Number LZWB



**Adjustable  
Wall Bracket Set**  
Part Number LZAB



**Ceiling Bracket Set**  
Part Number LZCB



**Eyebolt Set**  
Part Number LZEB

